

DIGITAL TECHNOLOGY IS CREATING A NEW STANDARD IN BARCODE READER PERFORMANCE

DIGITAL BARCODE READERS

HI-SPEED

FIRST IN ITS CLASS

HI-RESOLUTION

HI-PERFORMANCE



[HI-SPEED]

100% Decode Rate at 1300 scans/sec is Unmatched By Conventional Barcode Readers

New high-speed motor (2.6 times faster than previous model) and high-speed processing engine (HPPE).

*HPPE = Hi-Speed Parallel Processing Engine



[HI-RESOLUTION]

Minimum Readable Narrow Bar Width : 0.08 mm 0.003"

Digital processing guarantees stable decode of barcodes with incredibly small margins. This allows codes to be printed smaller without the worry of noise affecting the reader.

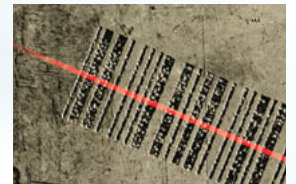


CODE39:16 digits

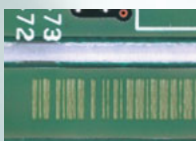
[HI-PERFORMANCE]

New Digital Processing Reads Very Low Quality Codes

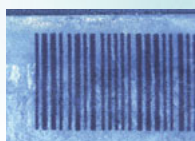
A new edge detection process accurately extracts the points of alternation between bars and spaces in even the most difficult-to-read barcodes, while digital compensation makes it possible to read varying narrow/wide ratios.



SAMPLE BARCODES



Misaligned marking (PCB)



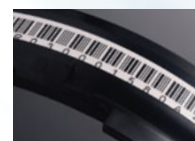
Shiny background (aluminum)



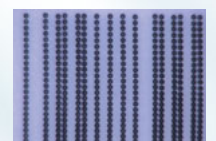
Thick print lines (coated paper)



Uneven background (cardboard)



Curved part (sticker)



Dot printing (plastic)

EXTENSIVE LINEUP



Front-reading type

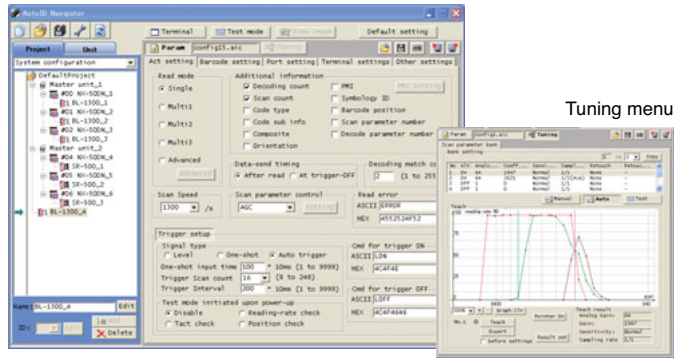
Side-reading type

Standard type	Reading distance	65 to 500 mm 2.56" to 19.69" (1.0 mm 0.04" narrow bar width)	Single: BL-1300 Raster: BL-1301
High-resolution type	Reading distance	45mm to 270mm 1.77" to 10.63" (0.5 mm 0.02" narrow bar width)	Single: BL-1300HA Raster: BL-1301HA
Long-distance type	Reading distance	160mm to 600mm 6.30" to 23.62" (1.0 mm 0.04" narrow bar width)	Single: BL-1370 Raster: BL-1371
Side-reading type	Reading distance	40mm to 250mm 1.57" to 9.84" (0.5 mm 0.02" narrow bar width)	Single: BL-1350HA Raster: BL-1351HA

NEW PROGRAMMING INTERFACE

Fully integrated software package for BL ID Readers
AutoID Navigator [BL-H13WE]

Basic Layout



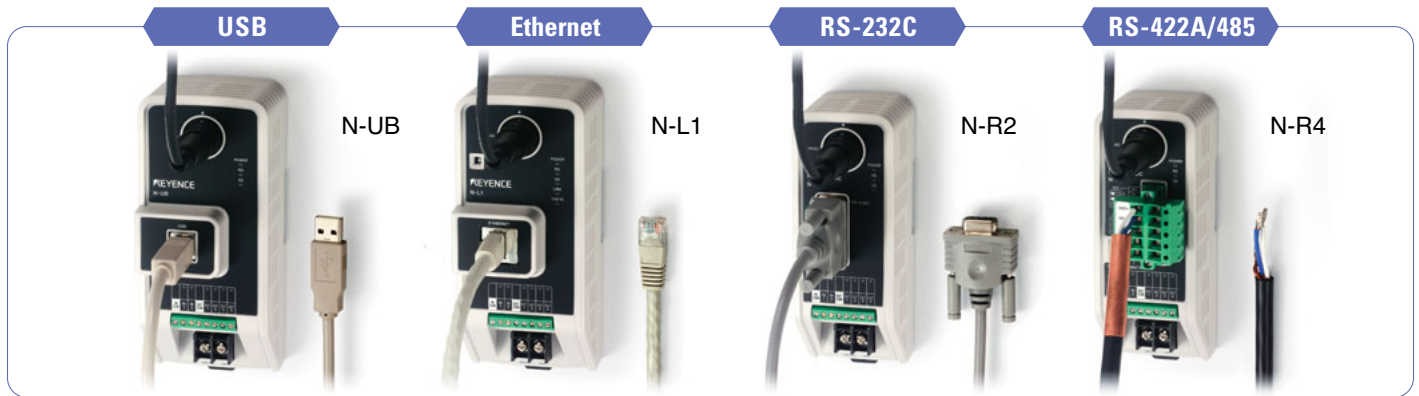
Tuning menu

Easily configure barcode readers in minutes with a user-friendly software interface

SUPPORTS USB/ETHERNET CONNECTION

The BL-1300 Series supports USB and Ethernet interfaces while continuing to support RS-232C, RS-422A and RS-485. This wide range of communication interfaces enables versatile system configuration.

CC-Link V2 DeviceNet™



LASER WARNING LABEL

The BL-1300 Series is a class 2 laser product. This product complies with FDA performance standards for laser product except for deviations pursuant to laser notice NO.50.



Specifications are subject to change without notice.

KEYENCE

CALL
TOLL
FREE

TO CONTACT YOUR LOCAL OFFICE
1-888-KEYENCE
1 - 8 8 8 - 5 3 9 - 3 6 2 3

www.keyence.com
Fax : 201-930-0099

KEYENCE CORPORATION OF AMERICA

Corporate Office 50 Tice Blvd., Woodcliff Lake, NJ 07677

Phone:201-930-0100

Fax:201-930-0099

E-mail:keyence@keyence.com

■ Regional offices	CO Denver	IN Indianapolis	MI Detroit	NJ Woodcliff Lake	OH Cincinnati	SC Greenville	VA Richmond
AL Birmingham	FL Tampa	KS Kansas City	MI Grand Rapids	NY Rochester	OH Cleveland	TN Nashville	WA Seattle
CA N. California	GA Atlanta	KY Louisville	MN Minneapolis	NC Charlotte	OR Portland	TN Knoxville	
CA Los Angeles	IL Chicago	MA Boston	MO St. Louis	NC Raleigh	PA Philadelphia	TX Dallas	

KEYENCE CANADA INC.

Head Office Phone:905-696-9970 Fax:905-696-8340 E-mail:keyence@keyence.com
Montreal Phone:514-694-4740 Fax:514-694-3206

KEYENCE MEXICO S.A. DE C.V.

Phone:+52-81-8220-7900 Fax:+52-81-8220-9097
Email:keyencemexico@keyence.com

KAI-0078