

Barriere miniaturizzate M8 ad alta velocità DC serie HE

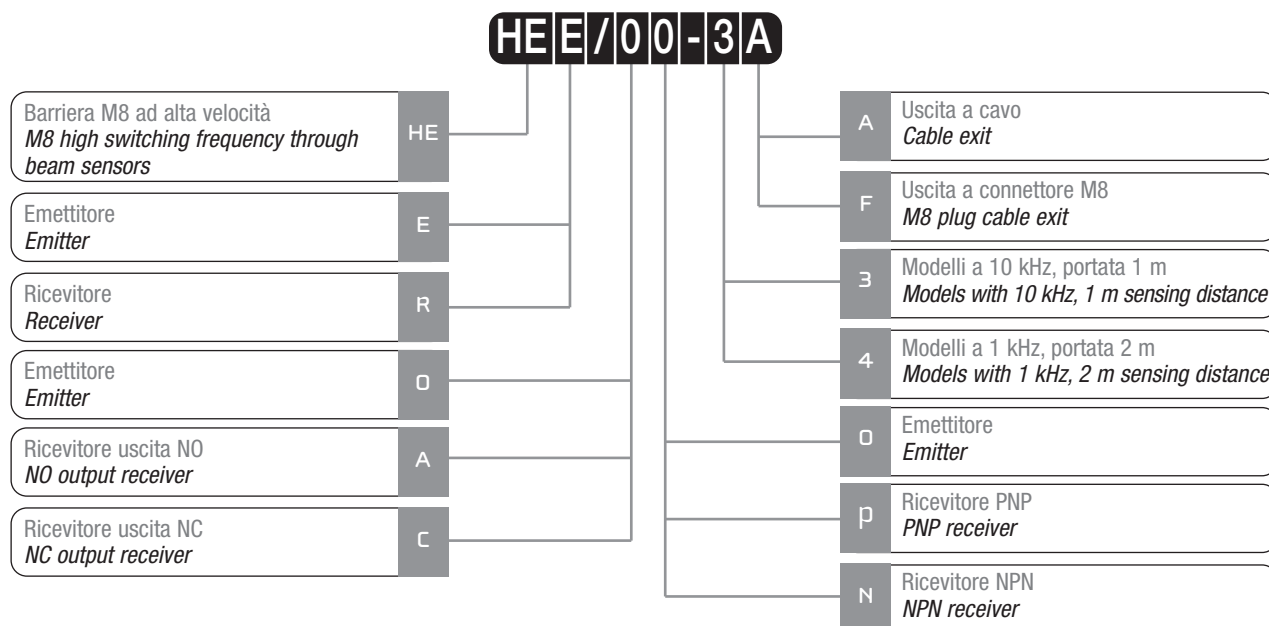
M8 miniaturized through-beam sensors DC HE series



Caratteristiche principali Main features

- > Modelli M8 con alta frequenza di commutazione
> *M8 through beam models with high switching frequency*
- > Indicatore LED sui ricevitori e sugli emettitori
> *LED status indicator for all models*
- > Totalmente protetti contro danneggiamenti di tipo elettrico
> *Complete protection against electrical damages*
- > Grado di protezione IP67
> *IP67 protection degree*
- > Corpo in acciaio inox
> *Stainless steel housing*
- > Tensione di alimentazione 10÷30 Vcc
> *Supply voltage 10÷30 Vdc*
- > Approvazioni: CE
> *Approvals: CE*

Descrizione del codice - Code structure



Modelli disponibili - Available models

Modello Model	Portata Distance	Frequenza di lavoro Switching frequency	Uscita Exit	PNP NO	NPN NO	PNP NC	NPN NC
Emettitore Emitter	1 m	10 kHz	Cavo / Cable	HEE/00-3A			
			M8	HEE/00-3F			
Ricevitore Receiver	1 m	10 kHz	Cavo / Cable	HER/AP-3A	HER/AN-3A	HER/CP-3A	HER/CN-3A
			M8	HER/AP-3F	HER/AN-3F	HER/CP-3F	HER/CN-3F
Emettitore Emitter	2 m	1 kHz	Cavo / Cable	HEE/00-4A			
			M8	HEE/00-4F			
Ricevitore Receiver	2 m	1 kHz	Cavo / Cable	HER/AP-4A	HER/AN-4A	HER/CP-4A	HER/CN-4A
			M8	HER/AP-4F	HER/AN-4F	HER/CP-4F	HER/CN-4F

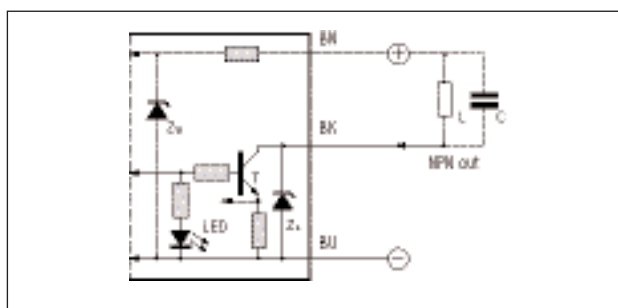
Specifiche (In accordo con IEC EN 60947-5-2) - Specifications (According to IEC EN 60947-5-2)

Modelli / Models	HEE/**-3*	HER/**-3*	HEE/**-4*	HER/**-4*
Distanza di lavoro nominale S_n Nominal sensing distance S_n	1 m (ExG=2)		2 m (ExG=2)	
Emissione / Emission	Infrarosso / Infrared (880nm)	-	Infrarosso / Infrared (880nm)	-
Corsa differenziale / Differential travel	≤ 10%			
Ripetibilità / Repeat accuracy	10 %			
Tensione di alimentazione / Operating voltage	10 ... 30 V _{CC} / V _{dc}			
Ondulazione residua / Ripple	≤ 10%			
Corrente assorbita / No load supply current	≤ 45 mA			
Corrente di uscita / Load current	≤ 100 mA			
Corrente di perdita / Leakage current	10 μA			
Caduta di tensione in uscita / Output voltage drop	≤ 1 V			
Tipo di uscita Output type	-	NPN o / or PNP NO o / or NC	-	NPN o / or PNP NO o / or NC
Frequenza di commutazione / Switching frequency	10 kHz		1 kHz	
Ritardo alla disponibilità / Time delay before availability	-	≤ 100 ms	-	≤ 100 ms
Protezione elettriche alimentazione Supply electrical protections	Inversioni di polarità, sovratensioni impulsive Polarity reversal, impulsive overvoltages			
Protezione elettriche uscita / Output electrical protections	Al cortocircuito (autoripristinante) / Short circuit (autoreset)			
Limiti di temperatura / Temperature range	-25°C ... +50°C			
Deriva termica / Temperature drift	≤ 10%			
Interferenza alla luce esterna Interference external light	3000 lux (lampad. incandescenza / incandescent lamp), 5000 lux (luce solare / sunlight)			
Grado di protezione / Protection degree	IP67 (EN60529) ⁽¹⁾			
Indicatori LED sul ricevitore Receiver's LED indicators	Giallo (alimentazione) Yellow (supply)	Giallo (uscita attiva) Yellow (output active)	Giallo (alimentazione) Yellow (supply)	Giallo (uscita attiva) Yellow (output active)
Materiale del contenitore / Housing material	Acciaio Inox / Stainless steel			
Materiale ottica / Optic material	Plastico / Plastic			

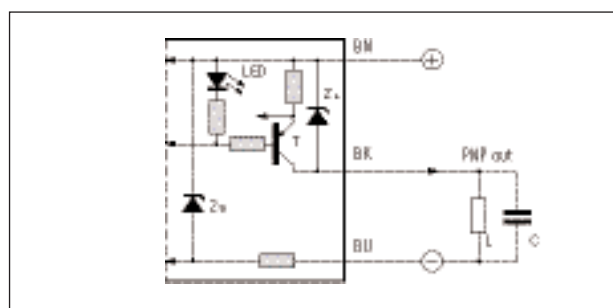
⁽¹⁾ Protezione garantita solo con il cavo a connettore correttamente montato / Protection guaranteed only with plug cable well mounted

Schemi elettrici delle connessioni - Electrical diagrams of the connections

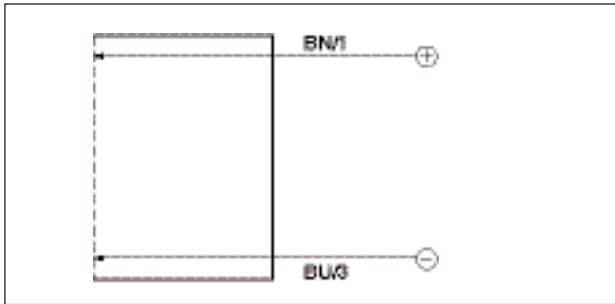
HER/*N-**



HER/*P-**



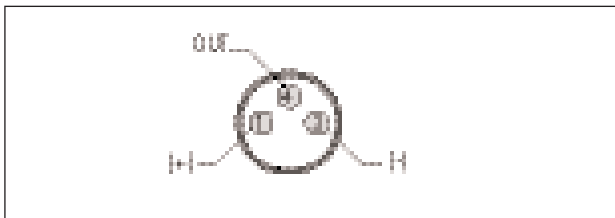
HEE/00-**



Legenda Key

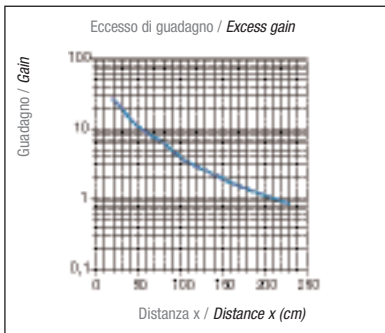
- BN → marrone/brown
- BK → nero/black
- PK → rosa/pink
- BU → blu/blue
- WH → bianco/white
- GY → grigio/gray

M08

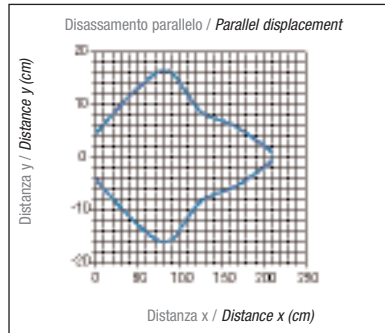


Curva di risposta - Response diagram

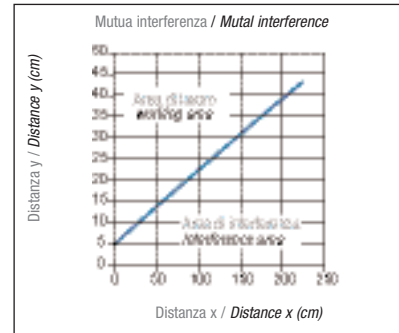
HE*/**-3*



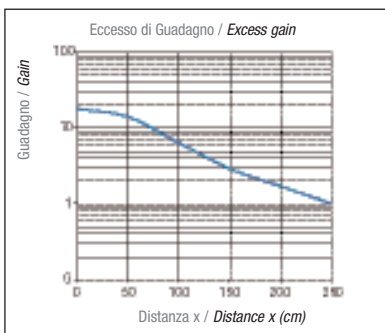
HE*/**-3*



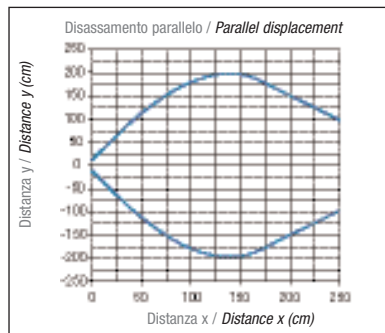
HE*/**-3*



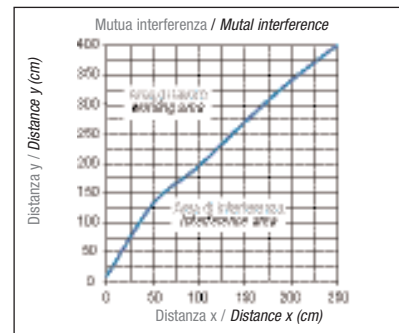
HE*/**-4*



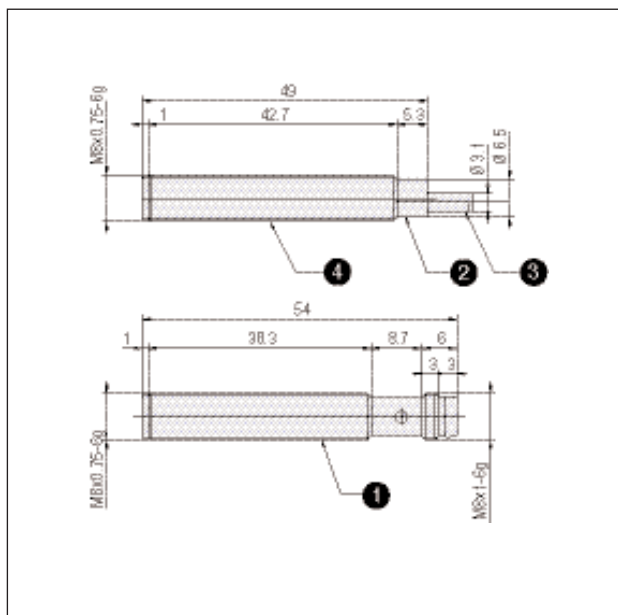
HE*/**-4*



HE*/**-4*



HE*/**_**



Legenda / Key

- ① Corpo cilindrico filettato M8x0,75 uscita F
Cylindrical threaded housing exit F
- ② Passacavo plastico
Plastic cable exit
- ③ Cavo Ø 3,1
Cable Ø 3,1
- ④ Corpo cilindrico filettato M8x1 uscita A
Cylindrical threaded housing exit A