

DVR EXPRESS® CORE2



Up to 15TB
Removable
Storage



Multi-Camera Uncompressed Digital Video Recorder



Features

- Reliable uncompressed video recording, direct to solid state media
- Long recording durations at high frame rates with live display
- Precise time stamping and camera synchronization
- Rugged, low-power and light-weight design
- Connects easily to laptops, workstations or tablet PCs
- Includes easy-to-use CoreView™ software with optional SDK
- Export recordings to common image and video file formats



Applications

- High Speed Event Analysis
- Industrial Process Troubleshooting
- Multi-Camera Motion Capture



Specifications

Available Models

DVR Express® Core 2 - Camera Link

- Configure ports as (4) CL-Base inputs, (1) CL-Full and (2) CL-Base inputs, or (2) CL-Base inputs with (2) CL-Base outputs (for CL-Base repeat/playback)
- Supports many Area Scan and Linescan cameras with monochrome or color data types
- All configurations supported (Base/Medium/Full/Full 80-bit) at clock rates up to 85MHz
- Part Number: CORE2CL

DVR Express® Core 2 - Camera Link Plus

- Same capabilities as model above plus support for (2) CL-Full inputs, either from separate cameras or a single camera with dual CL-Full outputs
- Can also be configured as (1) CL-Full input with (1) CL-Full output (for CL-Full repeat/playback)
- Part Number: CORE2CLPLUS

Common Features



Supported Video Data Rate:
Up to 1620 MB/s

Video Storage:
Removable Drive Shuttle with high-speed solid state media (up to 15TB capacity)

Connection to Control Computer:

- 6Gb/s eSATA (USB 3.0 adapter included)
- Required for configuration and operation
- Allows live video display, post-recording playback and video export to local storage

Auxiliary Signal Input/Output:

- (6) Bi-directional TTL I/O
- (2) LVDS inputs and (2) LVDS outputs
- (1) Remote On/Off

Time Stamping:

- High-precision time stamp per frame
- Time stamps can be synchronized to external IRIG or GPS time code receiver

Multi-DVR Synchronization:
Master/Slave configuration allows time reference distribution and synchronizes recording start/stop across multiple DVRs

Control Software:
CoreView™ or Streams™ 7 (SDKs available)

System Requirements:

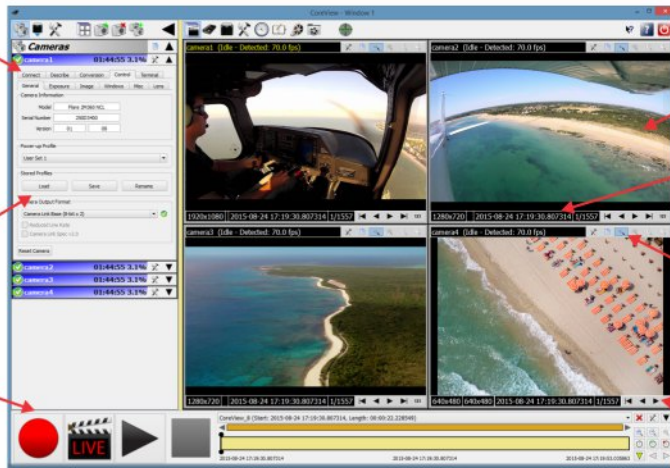
- Windows XP/Vista/7/8/8.1/10 (32/64-bit)
- Available eSATA or USB 3.0 port

CoreView™ Software

easy-to-use dialog for recording one or more cameras with one or more DVRs

embedded camera control dialog for Flare™ cameras and ASCII terminal for generic cameras

simple VTR-style operator controls



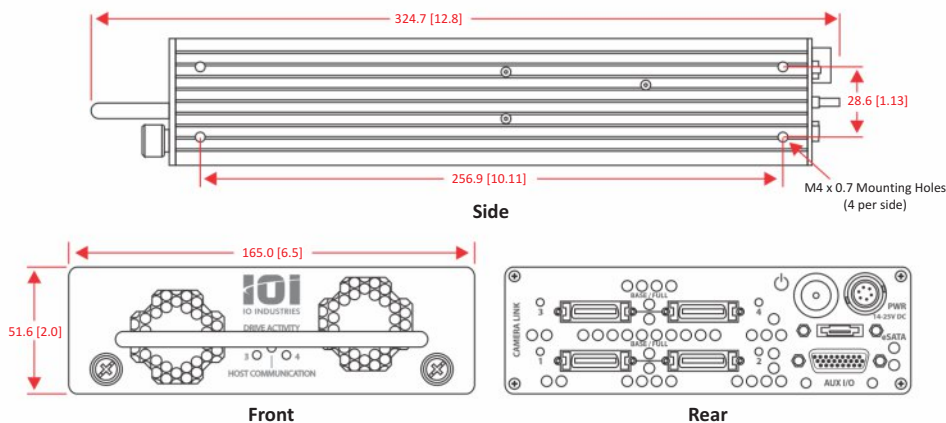
multiple video display windows

high-precision time stamps

pan and zoom displayed video or fit to window

seek to individual frames

Mechanical Diagrams



Mechanical / Electrical / Environmental

Dimensions:
325 x 165 x 52mm (12.8 x 6.5 x 2")

Weight:
Approx. 1.4 kg* (3.1 lbs)

Construction:
Anodized aluminum

Power:
14-25V DC, <40W*

Temperature:
Operating: 0° to 45°C
Storage: -20° to 60°C

*Depending on model and storage



visit us at: www.ioindustries.com

15940 Robin's Hill Road, London, ON, Canada N5V 0A8 Tel: +1 519 663 9570 Fax: +1 519 663 9571 info2@ioindustries.com
 Copyright© 2015 IO Industries Inc. Flare is a trademark of IO Industries. All other trademarks are the property of their respective owners.

Datasheet Rev. 1.0 (08/26/2015)
 Specifications subject to change without notice